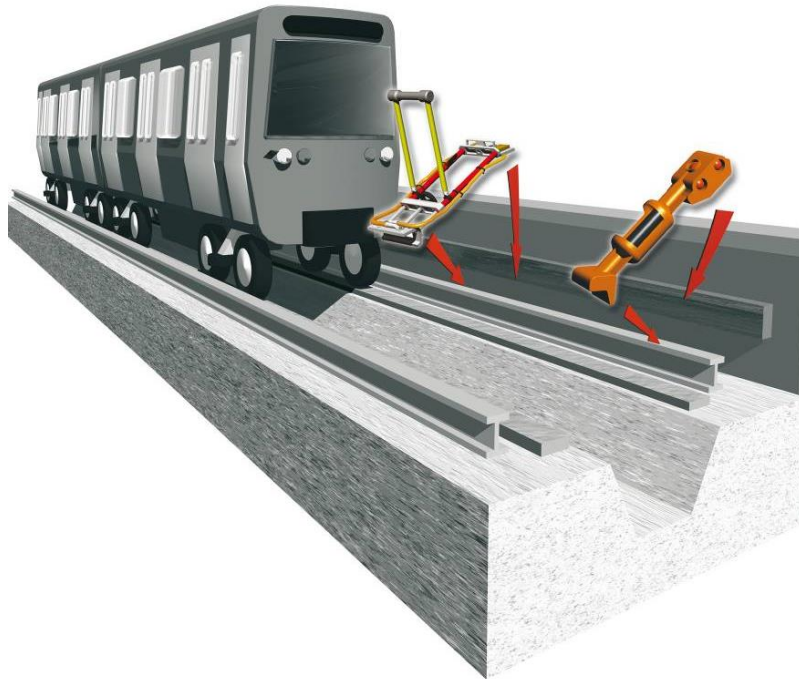


RAIL DIVISION

CL-1607/30

Third rail voltage detector



9911678_00

Operation and Maintenance Manual

CATU 10 à 20 Avenue Jean Jaurès 92220 Bagneux CEDEX
Phone : + 33 1 42314600 Fax : + 33 1 42314632

Introduction

This equipment is designed to check the absence of power supply on the third rail before working.

Reminder: A VOLTAGE ABSENCE CHECK MUST BE CARRIED OUT BEFORE INSTALLING GROUND AND SHORT CIRCUIT EQUIPMENT.

Instruction for use

Voltage detector

1. The operator must self-test the device before and after use on the network (and afterwards also to check the integrity of the device) in order to check its internal functionalities and be certain that it is operational .

Self-test procedure:

- Press the test button and check that the 5 indicator blocks are lit.

NEVER USE THE UNIT IF THE SELF TEST IS NOT GOOD.

2. Scenario: Place the rear skid on the run rail and place the nose of the unit under the third rail. Lift the nose so that it comes into contact with the third rail.

The nose remains in position thanks to the magnet and you can leave it in position.

If there is no voltage: the LED blocks do not light up.

If there is voltage: All the red LEDs light up.



Maintenance

Voltage detector

The detector is robust and does not require any special maintenance. Just keep it clean and dry when storing it. If necessary, clean the unit with a damp cloth.

It is recommended to test it periodically.

Users should develop their own guide to prove the integrity of the device and define the time needed between periodic inspections.

Packaging

Before using the equipment, make sure that it has not been damaged during transport.

After opening the packaging and checking, it is recommended to store the equipment in a clean, dry and dust-free place. To carry and store equipment bags and suitcases are available on request.

Guarantee

This equipment is guaranteed according to our general sales conditions of and are applicable on the basis of the respect of the instructions of use, maintenance and storage.

